



Never stop

The industry-leading
vehicle and plant hire
solution for business

Never stop solving

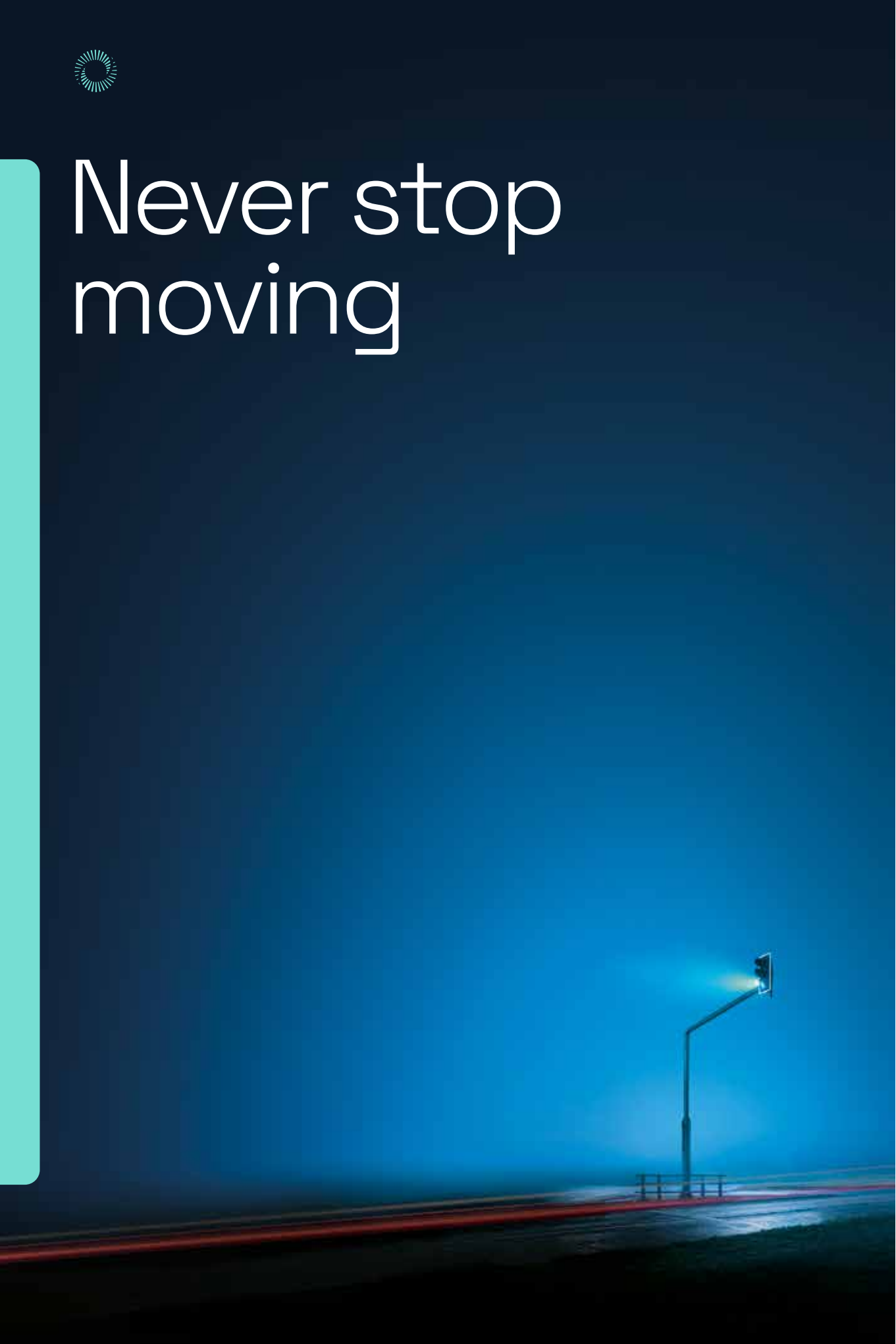
Business is unpredictable. It ebbs and flows, peaks and troughs, and never moves in a straight line. You can't fix it, but there is a way to thrive despite it.

We believe vehicle and plant hire plays a strategic role in business today – a long-term commercial partnership that tackles your biggest challenges head-on, not just the delivery of a short-term, functional service.

We're here to help you plan, prepare and deal with fluctuations as simply business-as-usual.



Never stop moving



It's the strategic
partnership
that transforms
unpredictability
into business-
as-usual.

For over 20 years, we've worked with businesses to develop a total vehicle and plant hire solution – a platform that **seamlessly and effortlessly** connects businesses with vehicles and suppliers with customers.

Our tech-led approach helps you optimise your business better by making it easier to take control and tackle challenges head-on. So you never stop thriving, no matter how turbulent your commercial environment.

With our team of dedicated experts and Iris®, our industry-leading platform, you get access to more vehicles and plant hire than anyone else.

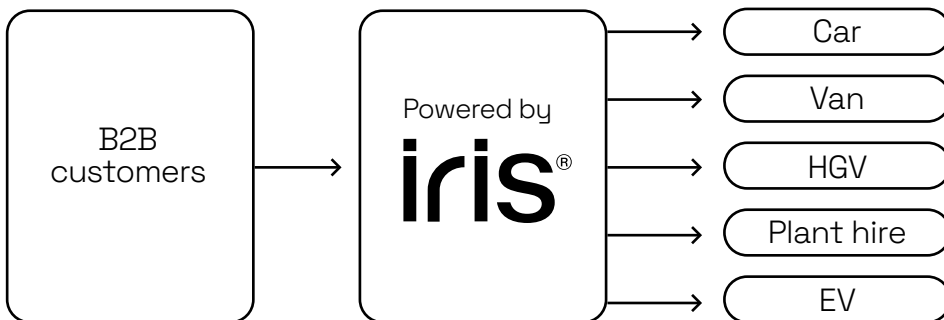
Our technology streamlines your processes and delivers secure, data-driven insights. It simplifies decision-making and transforms complex problems into reliable, fluid, and customised end-to-end solutions that keep your business moving.

It's the strategic partnership that transforms unpredictability into business-as-usual.



Never stop delivering

Nexus is the industry-leading vehicle and plant hire solution for business. Whatever your rental needs, however long for, all roads lead to Nexus.





300⁺ 550k⁺

UK suppliers

vehicles

24/7 2k⁺ 30^{sec}

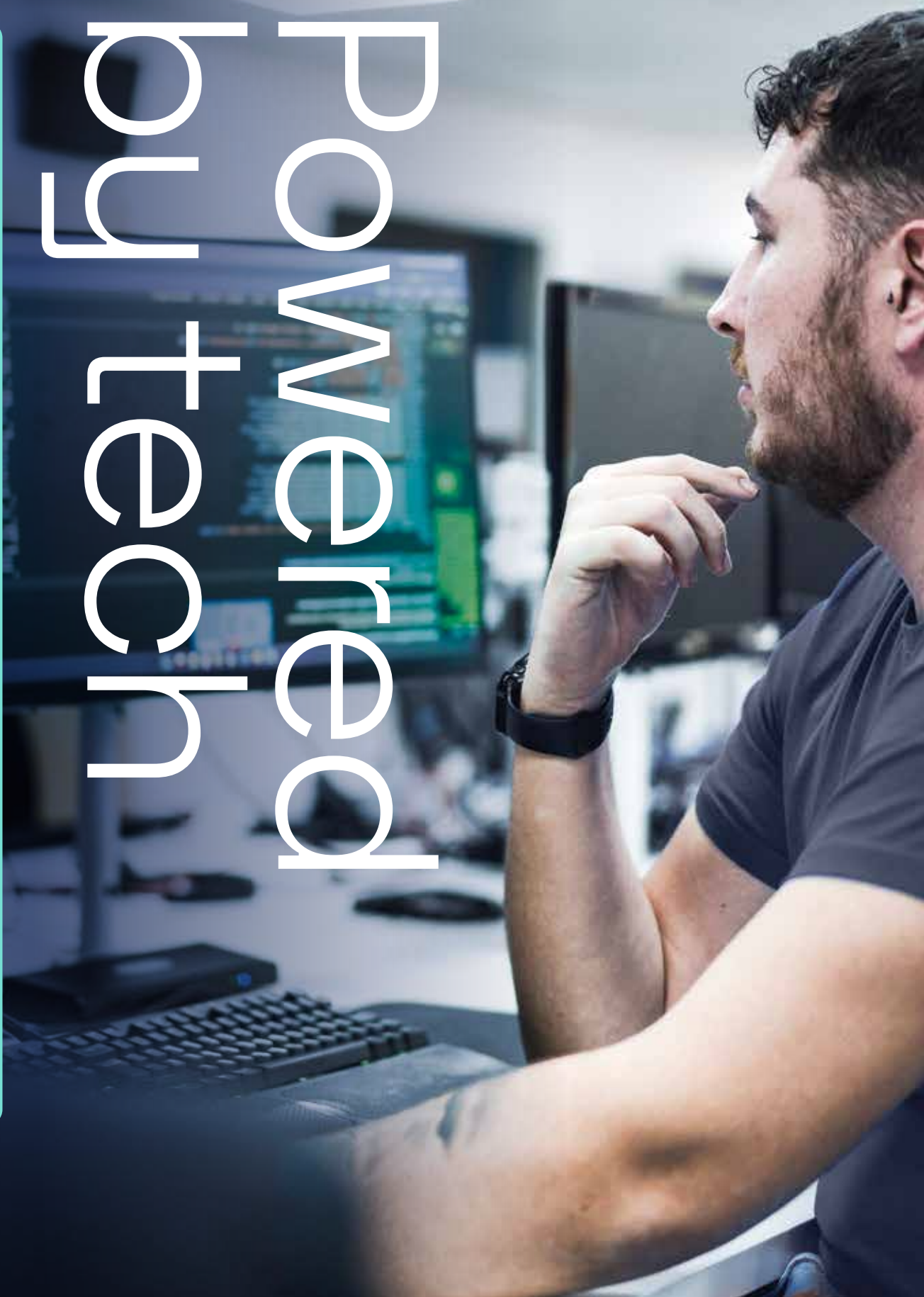
rental booking
& support

vehicle branches

or less to place a booking



Powered by tech





iris® is our industry-leading platform, available exclusively to Nexus customers and partners. It offers real-time access to the UK’s largest vehicle and plant hire supply chain, and much more:

Total oversight
See all rental bookings in one place

Fast bookings
Place your booking in under 30 seconds

Predictive insights
Access tech-driven data for easier decision-making and ESG reporting

Intelligent automation
Streamline tasks and resolve issues faster

Regular updates
Constantly advancing to keep you ahead

Bespoke interface
White-labelled interface for seamless branding

No charge
No hidden software rental fees

Secure
Robust cyber protection for uninterrupted services



Our teams are constantly moving **iris**® forward – tirelessly evolving its capabilities, which, in turn, develops your potential.

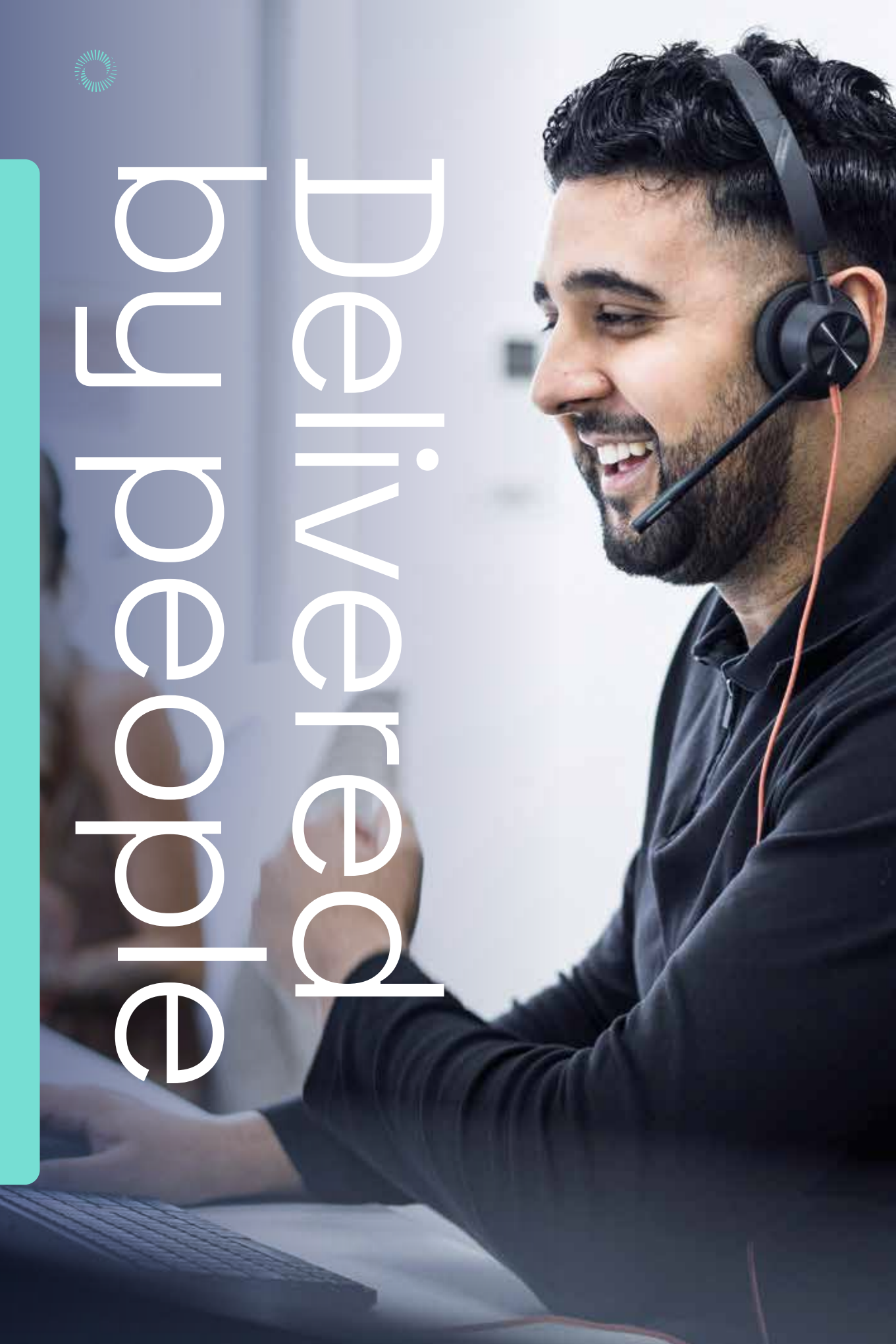
We're dedicated to
being at the forefront
of tech-led innovations.



- 1/ Uncover usage trends to maximise efficiencies.
- 2/ Easily search vehicles and plant machinery against set tariffs.
- 3/ Streamline admin with intelligent automation, saving time and money.
- 4/ Manage every part of your rentals, including damage claims, driver insights and spending.
- 5/ Get customised, reliable support from dedicated experts.



Delivered
by people



Our people empower us to be more than just service providers. Together, we're true partners, helping you embrace fluctuations and optimise for the future.

We're not your average workplace; we're a dynamic hub of ideas, people, industries, and cutting-edge solutions.

Our dedicated teams constantly collaborate, innovate and leverage the latest technology to drive your efficiency and ensure reliability.

In return, we give our people everything they need to unlock their full potential and develop advanced digital skills. Our tech-led culture and intelligent automation empower data-driven decision-making to keep things moving.

All this is backed by wellbeing support, financial rewards, and being part of a responsible business that gives back to society.

Put simply, our people, like our customers, never stop growing and achieving.



Customers

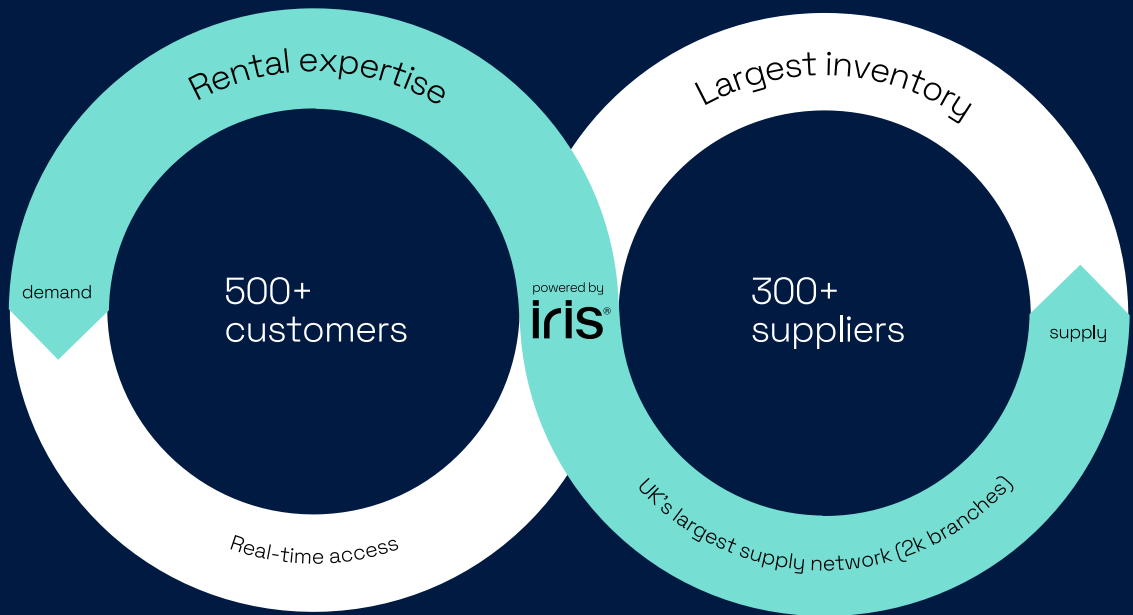
Corporates

Construction & plant hire

Logistics & retail

Utilities

Leasing providers



Rental suppliers

Cars

Vans

HGV

Plant and tool hire

Taxis

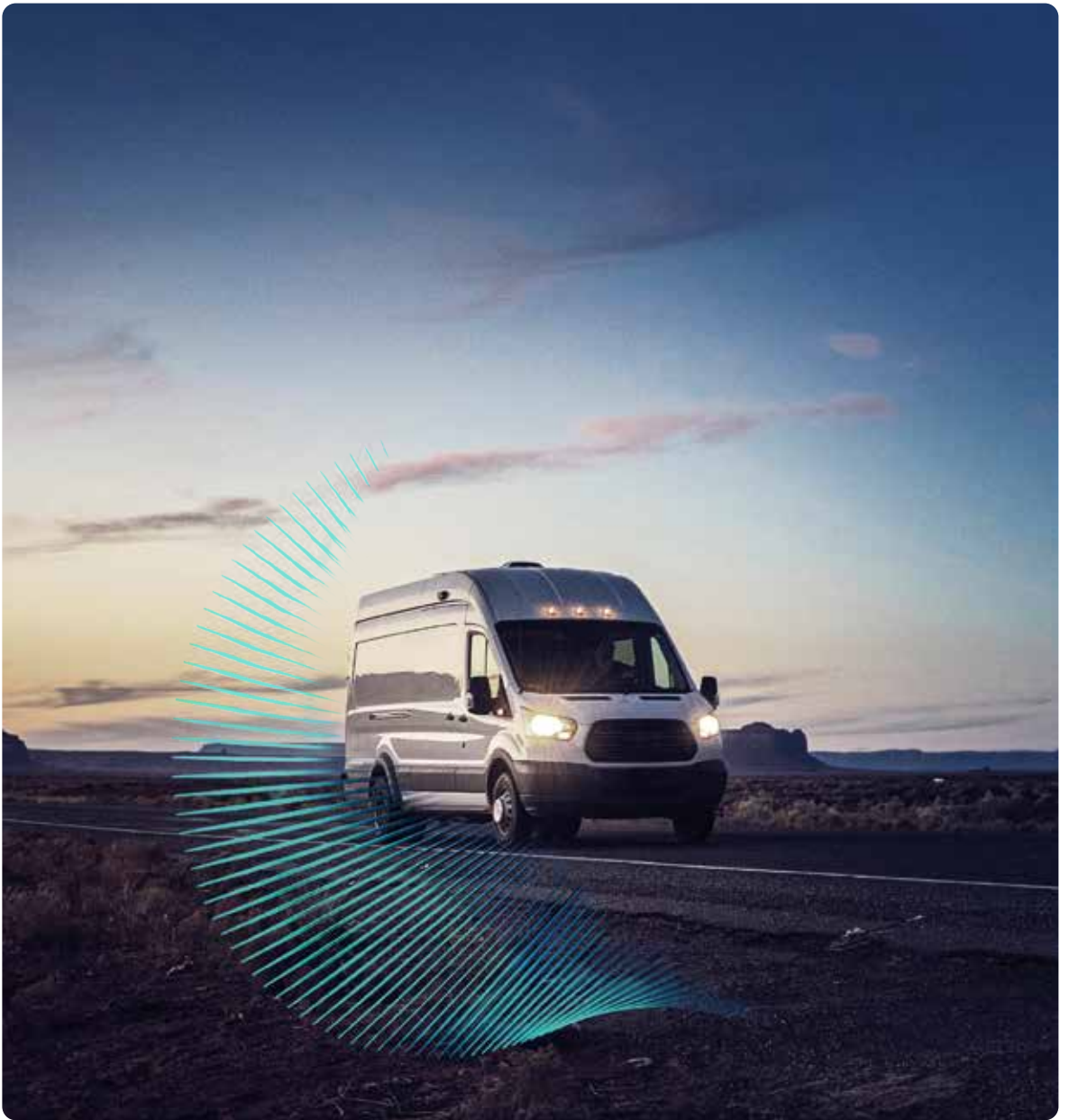
EVs

Vehicles with specification

We connect rental suppliers and customers

We create a mutual partnership
powered by **iris**®.

All working together to meet your
exact operational requirements.



Access
more rentals
in one place

We're the UK's leading B2B vehicle and plant hire platform for a reason.

As key outsourcing partners to the UK's largest vehicle and plant hire, leasing and credit hire companies, we have the scale and capabilities to handle high volumes and complex needs across various sectors, including logistics, rental, utilities, construction and plant hire.

Together, we deliver more solutions than any other rental partner.



Our values

Never stop is an attitude

At Nexus, we're always moving forward. As a responsible business, we grow, we innovate, and we enhance our tech relentlessly, so you never have to stop.

This attitude drives everything we do – for our customers, our people, and our suppliers – and is grounded in the synergy of four core values.



1/ Never stop evolving

Our team thrives on curiosity. We dig deep into your business to understand your needs and ambitions. Using secure, data-driven insights, we provide tailored recommendations. No off-the-shelf solutions, just fresh ideas that work best for your business. Change excites us; challenge fuels us.

2/ Never stop anticipating

We pride ourselves on our industry expertise, but we never rest on our laurels. We're committed to being technology leaders, constantly innovating to anticipate future needs and trends. With data-driven insight and intelligent automation, we predict your needs before anyone else. Because in this industry, knowledge is everything.

3/ Never stop committing

We keep your business moving with access to more solutions quickly and easily. Powered by tech and delivered by people, we tackle high-volume and complex needs at pace to keep your business running smoothly. We persist until every avenue is explored and success is achieved.

4/ Never stop collaborating

Strategic partners by name and nature. We treat our customers and suppliers as part of our team, helping you optimise spend, plan for your future and be open about challenges. By combining tech with teamwork, we turn data into strategic advantages for your business, opening doors to growth and innovation.



Our guiding principles

1/ Innovate for better

We offer real solutions to current and future challenges, powered by data-driven insights and a deep understanding of our customers. We're dedicated to being at the forefront of tech-led innovations. Ours sets the industry standard, taking B2B vehicle and plant hire online and predicting what lies ahead.

2/ Be tech-led & people-powered

Technology and talent go hand in hand. Our cutting-edge tech drives market-leading B2B rentals, but our dedicated people make the real difference. Every partnership thrives on the skills and commitment of our expert team, backed by the latest tech and intelligent automation, to deliver the best service and exceed expectations.

3/ Make the complex simple

Like our customers, we never want business to stand still. We keep wheels turning, simplifying the complexities of rental management with competitive pricing, rapid onboarding, intuitive billing, advanced cybersecurity and more. All on the back of Iris®, giving our customers a comprehensive view of their rental fleet.

4/ Be a partner, not a product

We see rentals as part of our customers' broader business needs. By building strong partnerships with fleet managers and supply partners and leveraging advanced analytics, we help customers optimise rental usage and create growth opportunities, leveraging data for a strategic advantage.

5/ Conquer the chaos

The best businesses don't let fluctuations hold them back. Which is why we bring the scale, flexibility and industry-leading technology to tackle challenges and seize opportunities head-on. Built to flex with our customers' ever-evolving needs, ready for whatever's around the corner.



Join the strategic partnership
that makes unpredictability feel
like business-as-usual.

Together, we will help you take
complete control of your ever-
fluctuating demand for commercial
vehicles and staff travel.

So, even in the most uncertain of
times, you never stop.

Next bus



Nexus Rental
Nexus House
Leeds
LS28 6AA

0871 984 1940
nexusrental.co.uk

